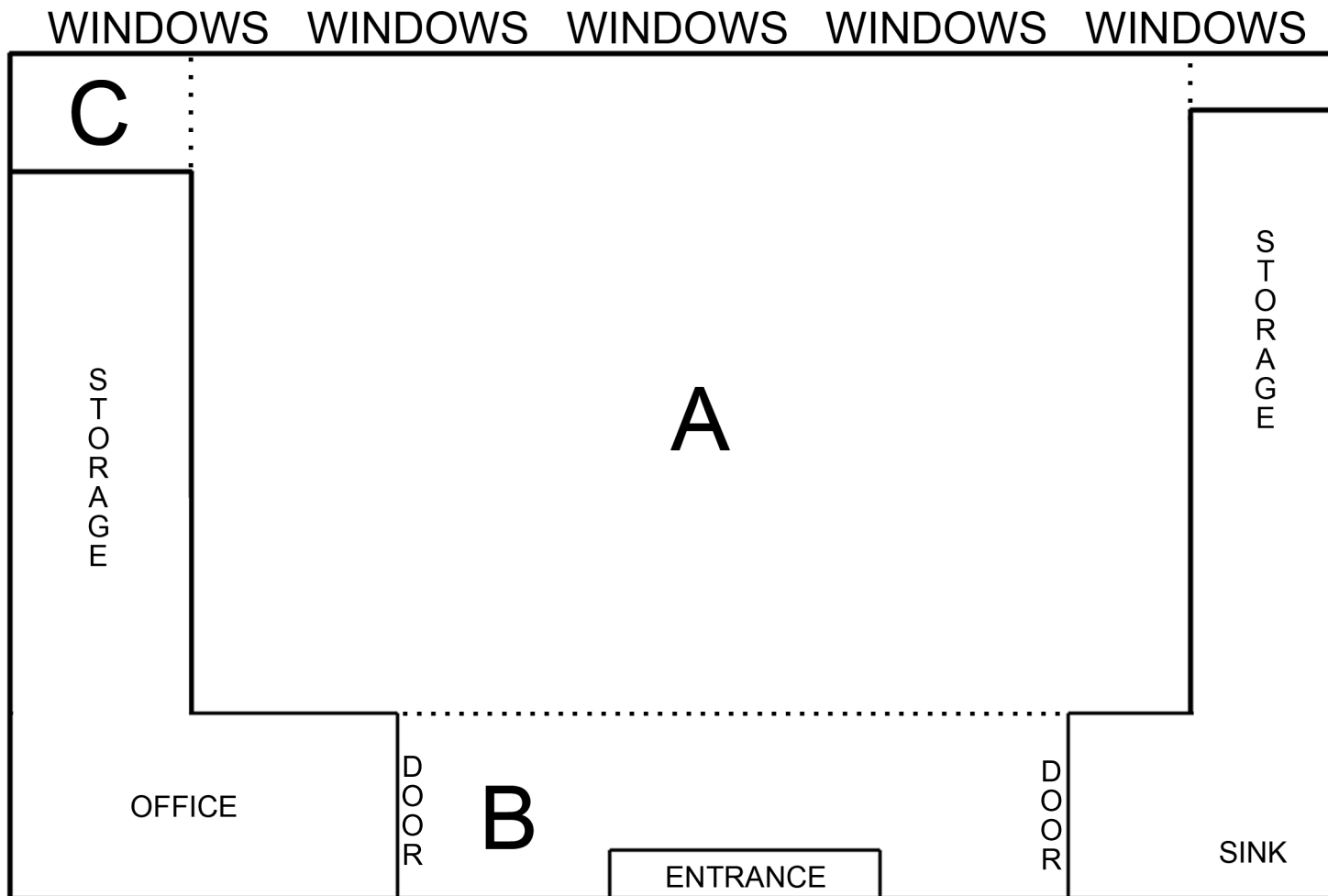


Floor Plan



A - a large central space ideal for sculpture or paintings/framed work. size (8.05m² by 6.80m²).

B - vestibule space with doors to storage areas, office and sink usually where exhibition material is displayed. size (3.77m² by 1.50m²)

C - small inlet space. Not regularly used however would be good for plinth work. size (1.05m² by 0.68m²)

Sink side wall - length 650cm*
Office side wall - length 580cm*

*excluding the corner.